

# RS232 TO ETH (B)

From Waveshare Wiki

[Jump to: navigation, search](#)

## Overview

There are two versions of this product, they are the same in terms of the software, and the differences in hardware functions are as follows:

- RS232 TO ETH (B): Common Ethernet port
- RS232 TO POE ETH (B): PoE Ethernet port

## Introduction

This is an RS232 device data acquirer / IoT gateway designed for an industrial environment. It combines multi functions in one, including serial server, Modbus gateway, MQTT gateway, RS232 to JSON, etc. The module features RS232 and an Ethernet port and uses screw terminals for power input. The rail-mount case design is small in size and easy to install. It is very suitable for collecting all kinds of RS232 instruments and sensors in the industrial field, including the

### RS232 TO ETH (B)



(<https://www.waveshare.com/rs232-to-eth-b.htm>)

RS232, Ethernet

### RS232 TO POE ETH (B)

([/wiki/RS232\\_TO\\_POE\\_ETH\\_\(B\)](/wiki/RS232_TO_POE_ETH_(B)))



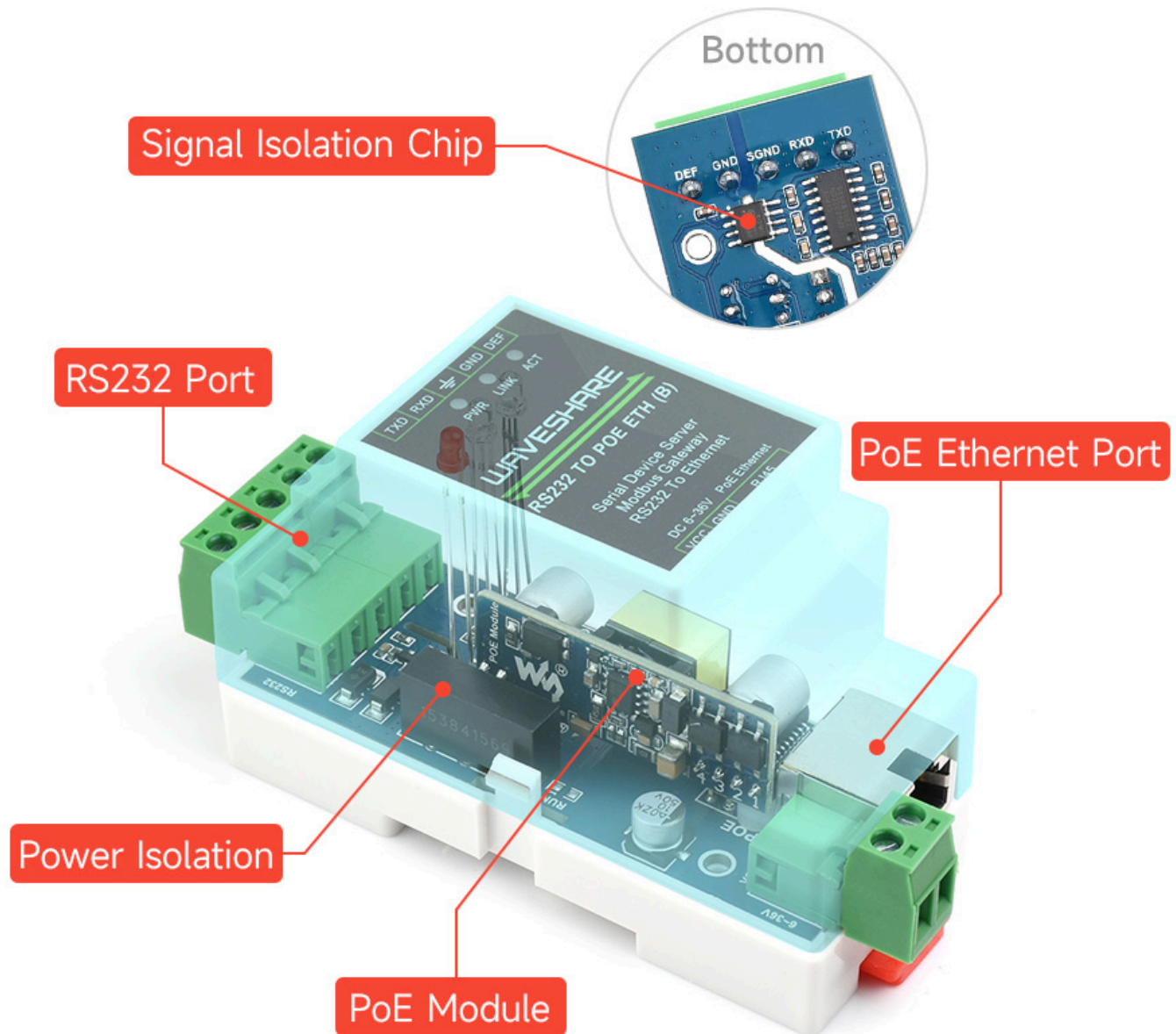
(<https://www.waveshare.com/product/rs232-485-422-to-poe-eth-b.htm>)

collection of local networks or the autonomous collection and delivery of uploaded cloud servers.

## Parameters

Model	RS232 TO ETH (B)	RS232 TO POE ETH (B)
Type	Serial server, Modbus gateway, MQTT gateway	
Basic Function	Bi-directional transparent data transmission between RS232 and Ethernet	
Communication Interface	RS232 port x 1, Ethernet port x 1	
Power Supply	Screw terminal DC 6~36V	Screw terminal DC 6~36V or PoE Ethernet port
Isolation Protection	Power isolation, signal isolation protection	
Communication Interface		
Ethernet	Common Ethernet port	PoE Ethernet port, support IEEE 802.3af standard
	10 / 100M auto-negotiation RJ45 connector, 2 KV surge protection	
Serial Port	Isolated RS232	
Serial Specification		
Baud Rate	300 ~ 115200 bps	
Parity Bit	None, odd, even, mark, space	
Data Bit	5 ~ 9 bit	
Flow Control	No flow control	
Software		
Protocol	ETHERNET, IP, TCP, UDP, HTTP, ARP, ICMP, DHCP, DNS	
Config Method	Host, web browser, device management functions library	
Communication Methods	TCP/IP direct communication, VCOM	
Operating Mode	TCP server, TCP client (coexisting with TCP server), UDP, UDP multicast	
Others		
Operating Temperature	-40℃ ~ 85℃	
Humidity Range	5% ~ 95% relative humidity	
Dimensions	L × W × H: 87 × 36 × 59 mm	

## Hardware Description



(/wiki/File:RS232\_TO\_ETH\_(B)-03.jpg)

## Features

- Supports TCP server, TCP client, UDP mode, and UDP multicast. As a TCP client, it also supports TCP server-side functions. Supports 30 TCP connections as a TCP server and 7 destination IPs as a TCP client.
- Supports the baud rate of 1200~115200bps, the data bit supports 5~9 bits, and the parity bit can be no check, odd check, even check, mark, or space.
- Support the function of sending MAC address on device connection, which is convenient for cloud management of devices.
- Provides a secondary development kit DLL development library for computer-side search and configuration of devices.
- Support Web browser configuration, support DHCP dynamic acquisition of IP, DNS protocol connection name server addresses.
- Support remote search for devices, configure device parameters and upgrade device demos in the cloud.

- Support remote viewing of the TCP connection status, serial port data sending, and receiving the status of the device through software. The virtual serial port supports the data monitoring function.

## Advanced Software Function

- Support Modbus gateway function, support Modbus RTU to Modbus TCP. It can support storage-type Modbus, which can automatically collect device data and store it; non-storage mode Modbus gateways are also supported.
- Support multi-host function: In the query mode of one question and answer, the Ethernet port allows multiple computers to access the same serial device at the same time.
- The MQTT gateway feature is supported.
- Support JSON to Modbus RTU and 645-meter protocol, support HTTP POST, and HTTP GET format to upload data.
- Support NTP protocol to obtain network time, for serial port output, the latter is used for protocol content delivery.
- Support custom heartbeat package and registration package functions: it can be convenient to communicate with the cloud and identify devices.
- Supports the function that TCP requires password authentication to establish a connection to ensure connection security.
- It supports the function of data submission and delivery in HTTP mode, and the cloud can directly use the HTTP GET command to interact with the serial port data of the device.

## Application

- As an IoT gateway, it serves as a communication bridge between devices and the cloud.
- Power, smart meters, and energy consumption monitoring.
- Remote monitoring and program download of various types of automation PLCs.
- Various configuration software and device communication interfaces.
- Internet of equipment in the field of access control security.

## Quick Test

### Hardware Connection

- Take RS232 TO ETH (B) as an example, and RS485 TO POE ETH (B) is connected in the same way.

Generally speaking, the serial server only needs to connect the power supply, serial port, and network cable. Among them, the power supply can use the field 2-wire power supply, which can be directly connected to the positive and negative terminals of the power supply. The serial port needs to be connected according to the user's serial port device. Connect 232 TX to the device RX, and 232 RX to the device TX. The Ethernet port is connected to a common network cable, which can be directly connected to the computer or connected to the

network through a switch.



(/wiki/File:RS485\_TO\_ETH\_(B)010.jpg)

## Software Installation

Vircom can be used to configure parameters such as device IP and create virtual serial ports. If you don't need the virtual serial port function, you can just download the free version configuration software.

- VirCom ([https://files.waveshare.com/upload/4/42/VirCom\\_en.rar](https://files.waveshare.com/upload/4/42/VirCom_en.rar))
- Virtual serial port driver (/wiki/File:Virtual-serial-port-control3.5.rar)

The driver installation needs to be decompressed. Double-click the software to install. If the virtual serial port in Vircom is not displayed, restart it and check it again.

## Examples

### TCP Communication Test

---

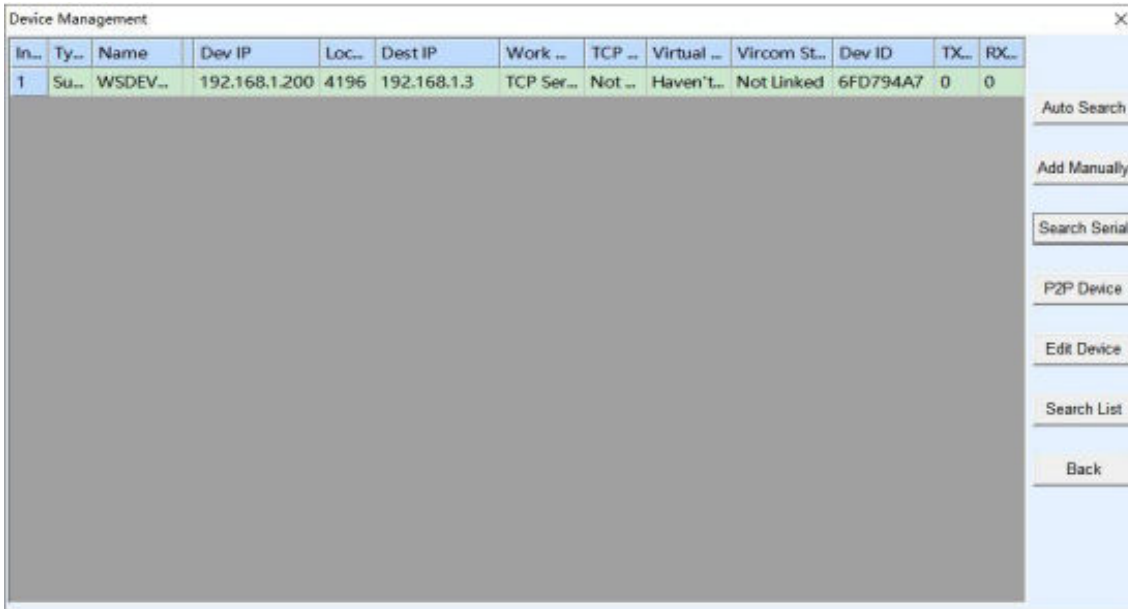
#### Software Preparation

- VirCom ([https://files.waveshare.com/upload/4/42/VirCom\\_en.rar](https://files.waveshare.com/upload/4/42/VirCom_en.rar))

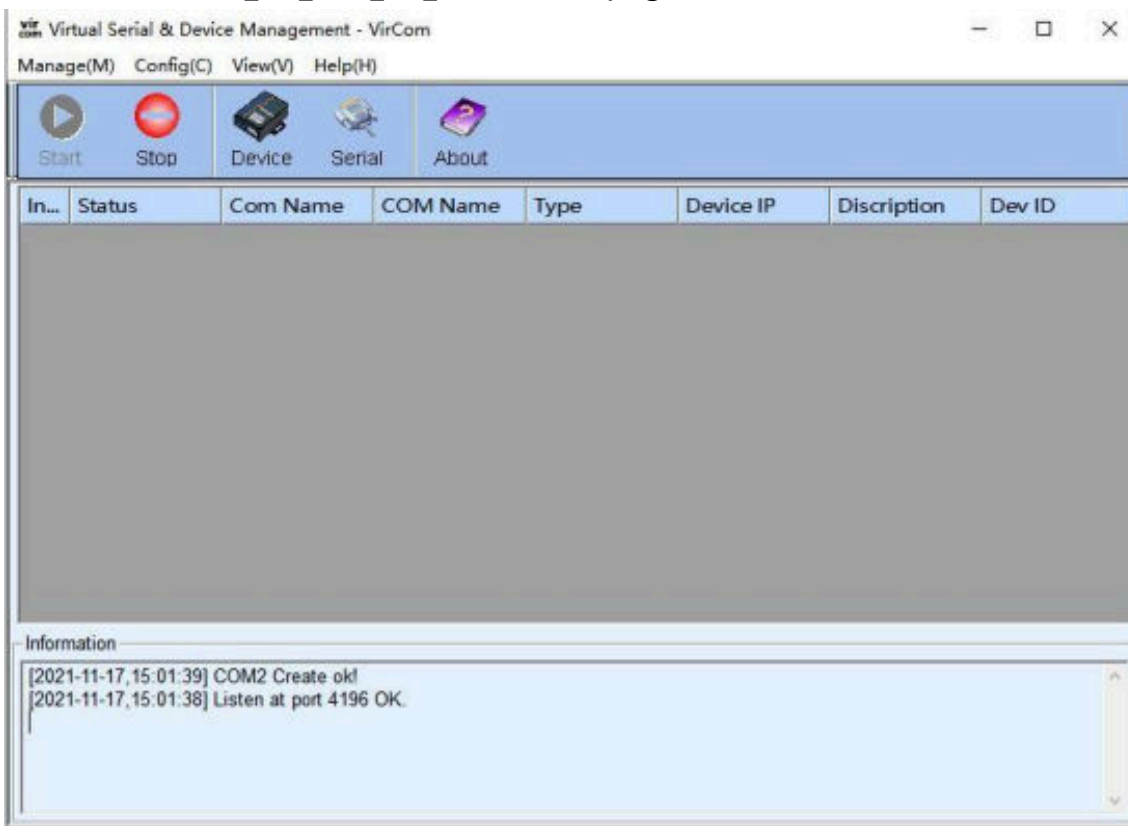
- Sscom5.13.1 (<https://files.waveshare.com/upload/b/b3/Sscom5.13.1.zip>)

## Operating Steps

After installing Vircom and connecting the device hardware, you can run the software and then click "Device Management" as shown below. With Vircom, it is very convenient to search and configure device parameters in different network segments, as long as the device and the computer running Vircom are under the same switch.



(/wiki/File:RS485\_TO\_ETH\_(B)\_Manual102.png)

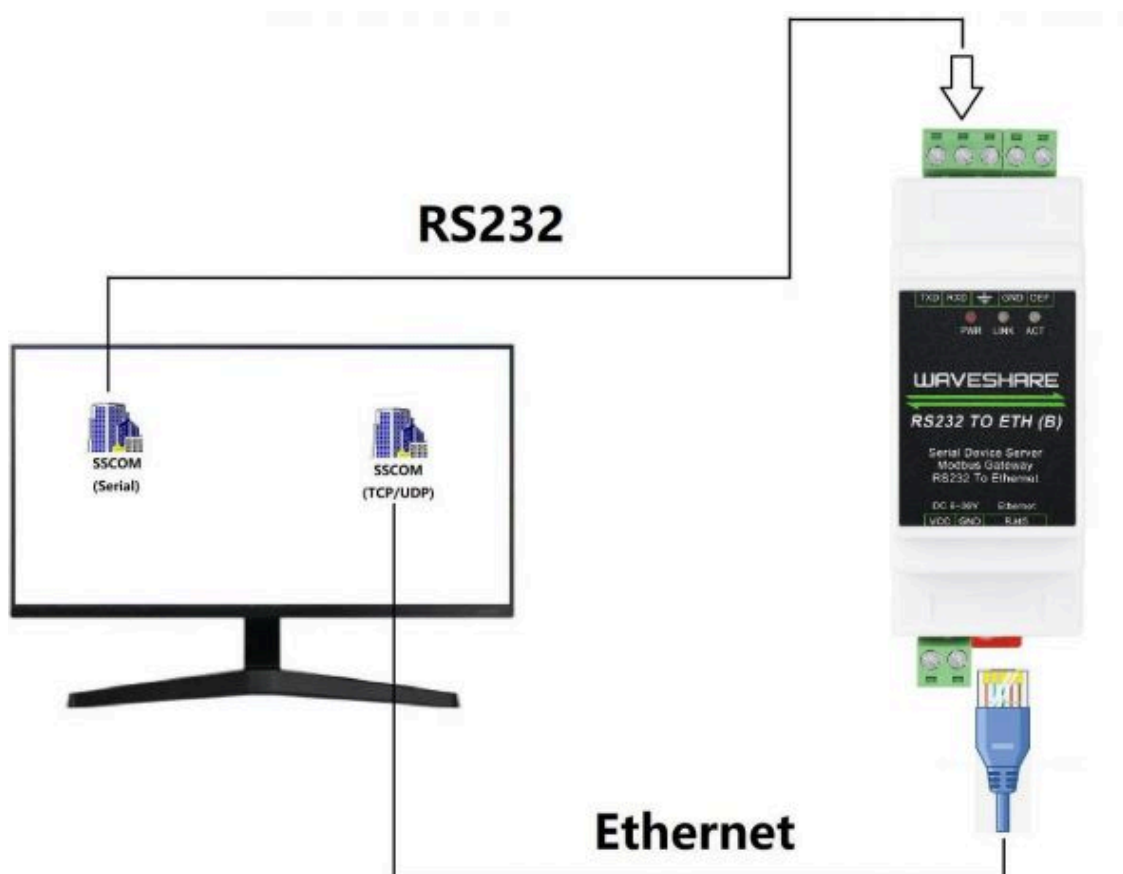


(/wiki/File:RS485\_TO\_ETH\_(B)\_Manual100.png)



(/wiki/File:RS485\_TO\_ETH\_(B)\_Manual103.png)

The following tests also require a USB TO RS232/485/TTL (B) (<https://www.waveshare.com/usb-to-rs232-485-ttl.htm>).



(/wiki/File:RS232\_TO\_ETH\_(B)\_Manu10.jpg)

The serial port to Ethernet port and Ethernet port to serial port data transparent forwarding function of the serial port server. Assuming that the COM port (USB TO RS232) of the PC is now connected to the serial port of the serial port server, then open the serial port

debugging assistant window and open the corresponding COM port, as shown below:  
In addition, open another serial port debugging assistant window and use it as a TCP client mode, fill in the destination IP as the IP of the serial port server (currently 192.168.1.200), the destination port as 4196, and then click the "Open" button, as shown in the figure below:



(/wiki/File:RS232\_TO\_ETH\_(B)\_Manual104.jpg)

In the serial debugging assistant SSCOM2 set as TCPClient, enter "TCPClient: Waveshare Test" and click send, then the data will be transferred to the RS232 interface through the serial server's Ethernet port, and then sent to the USB TO RS232, and then displayed in the serial debugging assistant SSCOM1 out; conversely, enter "USB TO RS232: Waveshare Test" in SSCOM1, click send, you can also send to SSCOM2, and display it.

## Virtual Serial Port Test

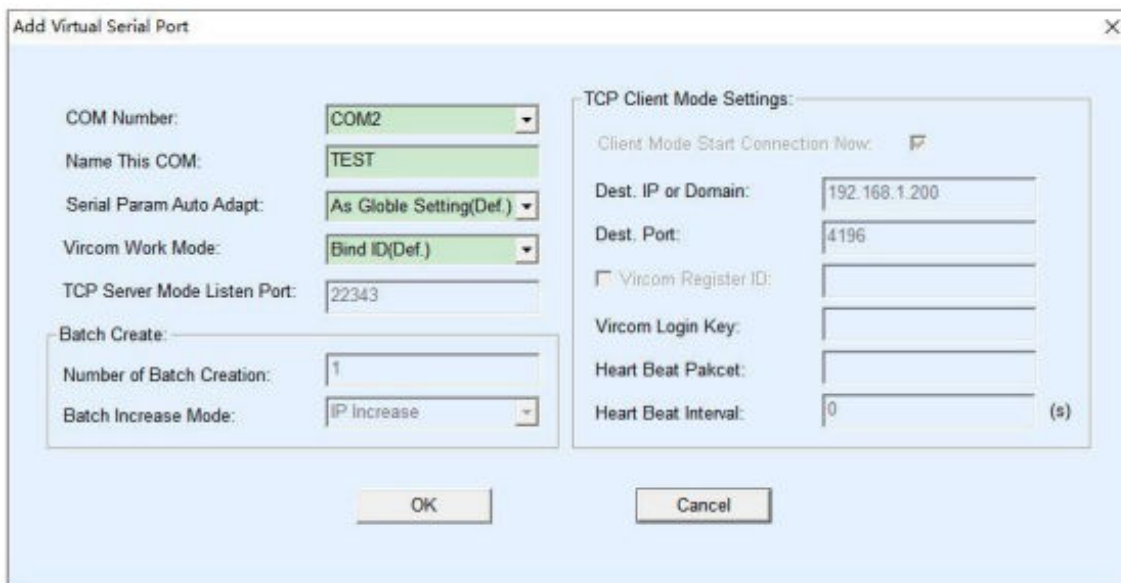
The SSCOM2 in the figure communicates directly with the serial port server through TCP. In order to allow the user's already developed serial port software to communicate with the serial port server, a virtual serial port needs to be added between the user program and the serial port server. As shown in the figure, Vircom, and user programs run on one computer, Vircom virtualizes a COM port and makes this COM port corresponding to the serial port server. When the user program opens COM communication, it can be sent to the user's serial device through the Vircom serial server. The steps to do this are shown below:



(/wiki/File:RS232\_TO\_ETH\_(B)\_Manual\_102.jpg)

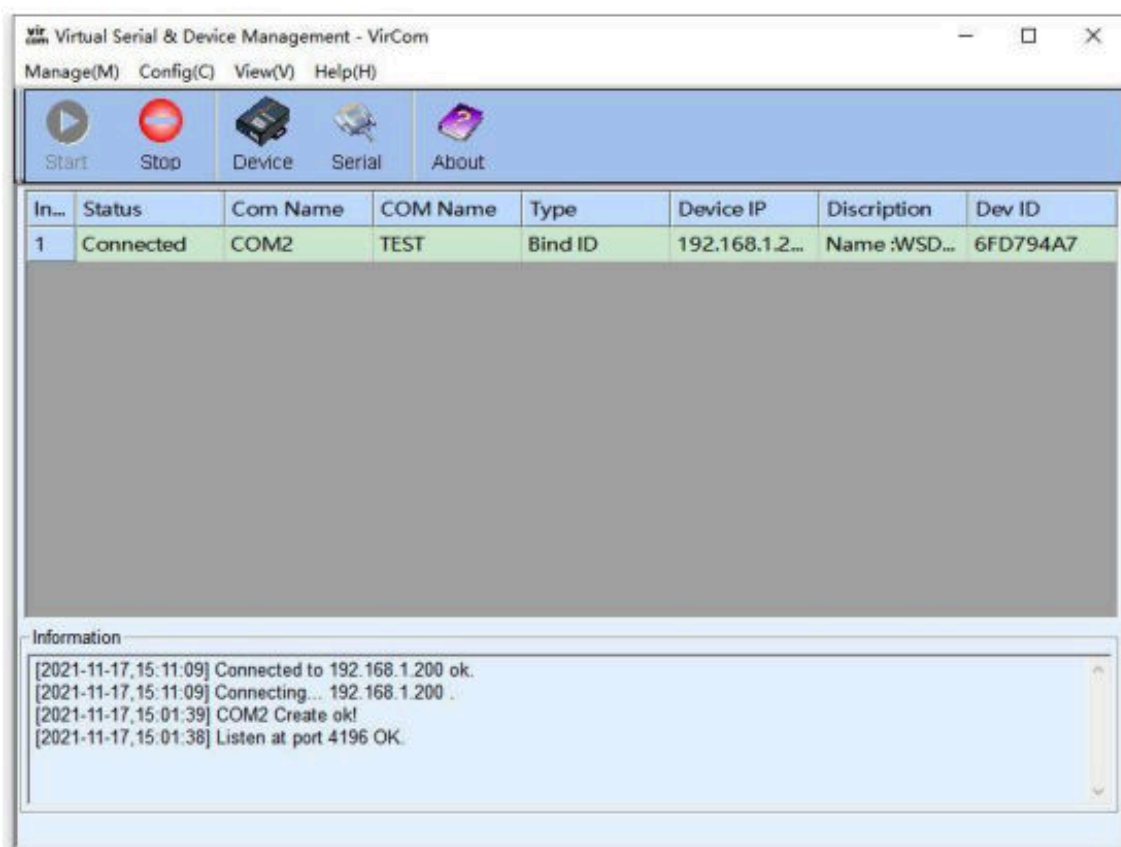
Click the "UART management" in the Vircom interface, click "add", and then choose COM2. Among them, COM5 is the COM port that did not exist in the computer.





(/wiki/File:RS485\_TO\_ETH\_(B)\_Manual\_103.png)

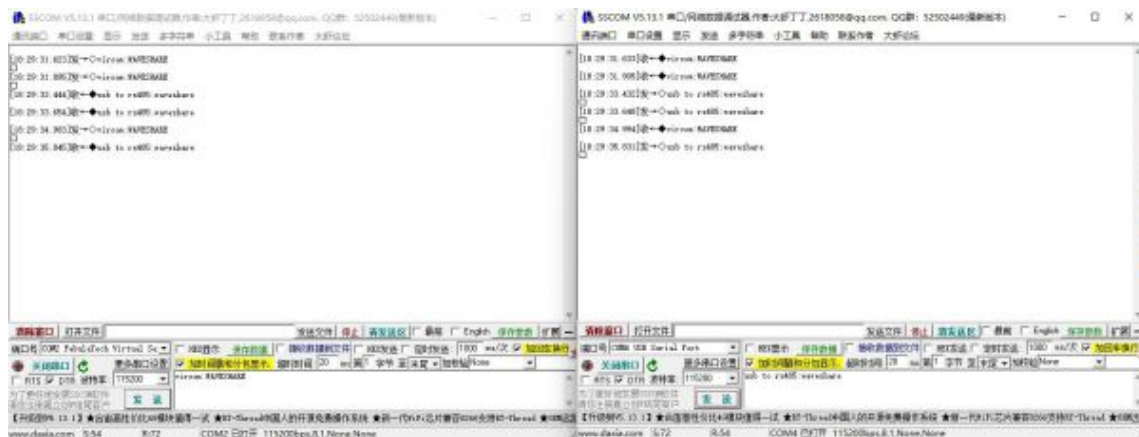
Then enter the device management, and double-click the device that needs to be bound to COM2. As shown in the figure, select COM2 in the "Virtual Serial Port" list in the upper left corner. Then click "Modify Settings", and then click "Restart Device". and return to the main interface of Vircom. It can be seen that COM2 has been connected to the device whose IP is 192.168.1.200. In this case, COM2 can be used instead of SSCOM2 for communication.



(/wiki/File:RS485\_TO\_ETH\_(B)\_Manual\_104.png)

Open SSCOM to simulate the user's serial port program, open COM2 (the virtual serial port above), open another SSCOM to simulate a serial port device, and open COM3 (hardware serial port). At this time, the data link sent by COM2 is as follows: COM2 —> Vircom —> the network port of the serial server —> the serial port of the serial server —> COM3.

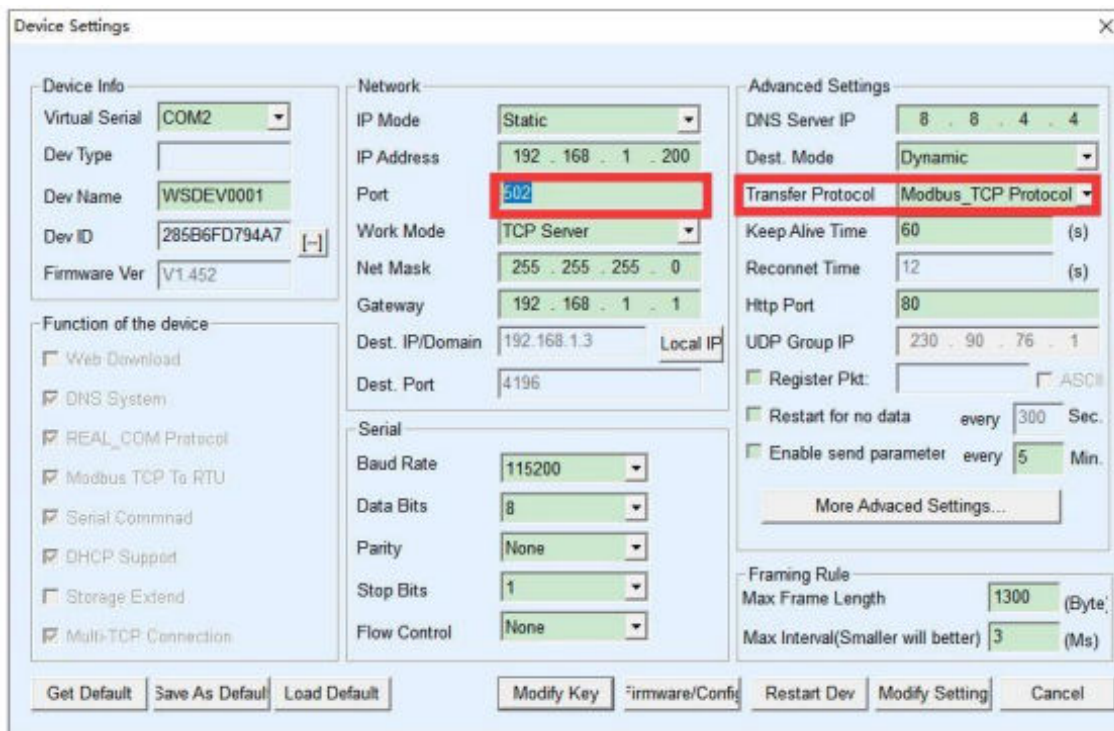
Conversely, COM3 to COM2 can also transmit data: COM3 -> the serial port of the serial server -> the network port of the serial server -> Vircom -> COM2. As shown in the figure below, both parties send and receive data. If COM4 is replaced with the user serial device, then COM5 can realize the communication with the user device.



(/wiki/File:RS485\_TO\_ETH\_(B)\_Manual\_105.jpg)

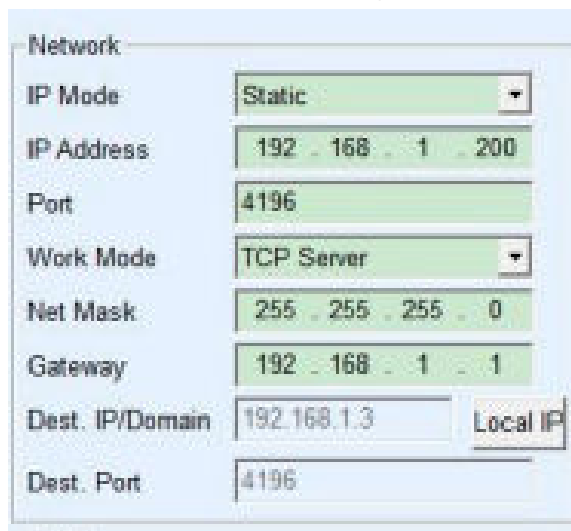
## MODBUS TCP Test

By default, the data between the serial port and the Ethernet port are transparently transmitted. If you need to convert Modbus TCP to RTU, you need to select the conversion protocol as "Modbus TCP<-->RTU" in the device settings dialog box, as shown in the figure below. At this time, the device port automatically changes to 502. At this time, the user's Modbus TCP tool is connected to the IP port 502 of the serial server and the sent Modbus TCP command will be converted into an RTU command and output from the serial port. For example, if the serial port server network port receives the Modbus TCP command of 00 00 00 00 0601 03 00 00 0a, the serial port outputs the command of 01 03 00 00 00 0a c5 cd. Note: The serial port may send multiple 01 03 00 00 00 0a c5 cd commands because the default Modbus adopts the storage mode, which will automatically train the query commands. How to switch to non-storage mode will be explained later.



(/wiki/File:RS485\_TO\_ETH\_(B)\_Manual\_050.png)

If the user's Modbus TCP software is used as a slave station (Slave), it is necessary to select the conversion protocol, then change the working mode to the client, the destination IP to the IP of the computer where the Modbus TCP software is located, and the destination port to 502, as shown in the figure below shows.

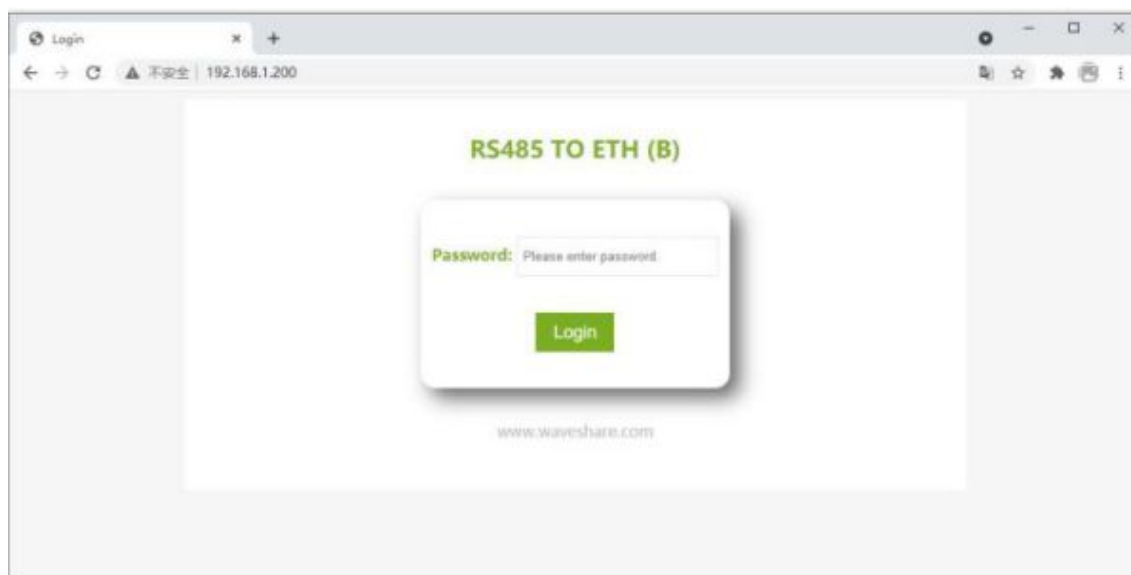


(/wiki/File:RS485\_TO\_ETH\_(B)\_Manual\_051.png)

## WEB Configuration

Using Vircom, you can search and configure device parameters in different network segments. For Web configuration, you must first ensure that the computer and the serial server are in the same IP segment, and you need to know the IP address of the serial server in advance. But web configuration can be done on any computer without Vircom.

1. Enter the IP address of the serial server in the browser, such as <http://192.168.1.200> (<http://192.168.1.200>).



(/wiki/File:RS485\_TO\_ETH\_(B)\_Manual\_0051.jpg)

2. Enter a password in Password: there is no login password set by default in the factory, you can enter a password at will, and click the Login button to log in. After setting the password to log in, the settings at "Modify webpage login password" will take effect:

**Device Information**

Device Name	WSD0001	Firmware Version	V1.452	Device MAC	28-5B-6F-D7-94-A7
-------------	---------	------------------	--------	------------	-------------------

**Network Settings**

Device IP	192.168.1.200	Device Port	4196	Device Web Port	80
Work Mode	TCP Server	Subnet Mask	255.255.255.0	Gateway	192.168.1.1
Destination IP/DNS	192.168.1.1	Destination Port	4196	IP mode	Static

**Serial Settings**

Baudrate	115200	Databits	8	Parity	None
Stopbits	1	Flow control	None		

**Advanced Settings**

No-Data-Restart	Disable	No-Data-Restart Time	300 second	Reconnect-time	12 second
-----------------	---------	----------------------	------------	----------------	-----------

**Multi-Host Settings**

Protocol	None	Instruction Time out	0	Enable Multi-host	No
RS485 Conflict Time Gap	0				

NOTE: 1. Multi-host is always enabled when Protocol is Modbus TCP to RTU. 2. Time out is always 0 when Multi-host is disabled.  
3. Time out only can be set as multiply of 32.

**Modify Web Login Key**

New Key	*****	Input Key Again	*****
---------	-------	-----------------	-------

**Submit**

(/wiki/File:RS485\_TO\_ETH\_(B)\_Manual\_052.png)

3. The serial server parameters can be modified on the web page that appears. For the relevant parameters, please refer to Table 4 for the meaning of the parameters.

4. After modifying the parameters, click the "Submit Modification" button.

5. If configuring and downloading MQTT and Jetson Modbus firmware overwrites the webpage file of the configuration interface, resulting in the failure to open the configuration webpage, please follow the steps below to re-download the webpage file:

- Config Web file ([https://files.waveshare.com/upload/1/1e/RS232\\_TO\\_ETH\\_%28B%29\\_firmware.zip](https://files.waveshare.com/upload/1/1e/RS232_TO_ETH_%28B%29_firmware.zip)) to RS232 TO ETH (B).
- Config Web file ([https://files.waveshare.com/upload/9/9e/RS232\\_TO\\_POE\\_ETH\\_%28B%29\\_firmware.zip](https://files.waveshare.com/upload/9/9e/RS232_TO_POE_ETH_%28B%29_firmware.zip)) to RS232 TO POE ETH (B).
- Select Find the web firmware locally and select the path to extract it yourself.

Webpage directly download mode

Webpage directly in local PC:

E:\FAQ-QUECTEL\RS485 TO ETH B\2043\_waveshare\_web\_zx

Special configs:

---

Code file download mode

Select code file:

C:\firmware.bin

---

Download through the network ☒ Download through serial port

Device IP address or domain: 192.168.10.61

Download port (Don't modify): 1092

Serial port: COM1

Baundrate: 115200

---

Device modual/type: 2003

Flash size: 256 KB

DevID: 285FCAD56BAD

Please close the opened webpage of the modual in the browser, before start download.

(/wiki/File:Web-config-tool.png)

## Resource

### Document

- RS232 TO ETH (B) MQTT And JSON User Manual ([https://www.waveshare.com/wiki/RS485\\_TO\\_POE\\_ETH\\_\(B\)\\_MQTT\\_And\\_JSON\\_User\\_Manual](https://www.waveshare.com/wiki/RS485_TO_POE_ETH_(B)_MQTT_And_JSON_User_Manual))

### Software

- Vircom ([https://files.waveshare.com/upload/4/42/VirCom\\_en.rar](https://files.waveshare.com/upload/4/42/VirCom_en.rar))
- Virtual serial port control (<https://www.waveshare.com/wiki/File:Virtual-serial-port-control3.5.rar>)
- SSCOM (<https://files.waveshare.com/upload/b/b3/Sscom5.13.1.zip>)



- TCPIP/UDP debug tool (<https://files.waveshare.com/upload/7/75/TCP%26UDPDebug.zip>)

## Related Application Example

- RS485 TO ETH (B) Connect Alibaba Cloud And EMQX ([https://www.waveshare.com/wiki/RS485\\_TO\\_ETH\\_\(B\)\\_Connect\\_Alibaba\\_Cloud\\_And\\_EMQX](https://www.waveshare.com/wiki/RS485_TO_ETH_(B)_Connect_Alibaba_Cloud_And_EMQX))

## FAQ

**Question:RS232 TO ETH (B)LINK is yellow, what should I do if I cannot access the network?**

**Answer:**

- Set static IP, for example:

RS232 TO ETH (B) set to 192.168.1.200 port number 1111.

The computer is set to 192.168.1.199 port number 1111.

- Tested with the TCP server shared by the Internet community: 120.79.100.197 port number 10002.
- If it still doesn't work, please reset to factory settings.

**Question:What is the power of RS485 TO ETH (B)?**

**Answer:**

The detailed data is as follows:

Specifications	Input Voltage (V)	Input Current (A)	Power
	9V	0.020	0.18W
	12V	0.015	0.18W
	24V	0.008	0.19W

(/wiki/File:RS485-TO-ETH-B-POWER-EN.png)

**Question:RS485 TO ETH (B) How to restore factory settings?**

**Answer:**

- 1) Short the DEF pin for 5 seconds:
- 2) Get the default parameters and modify the settings:

Device Settings

**Device Info**

Virtual Serial: Not Use

Dev Type: ZLSN2007

Dev Name: ZLDEV0001

Dev ID: 285FCAD56BAD

Firmware Ver: V1.452

**Function of the device:**

☐ Web Download

☒ DNS System

☒ REAL\_COM Protocol

☒ Modbus TCP To RTU

☒ Serial Commnad

☒ DHCP Support

☐ Storage Extend

☒ Multi-TCP Connection

**Network**

IP Mode: Static

IP Address: 192 . 168 . 1 . 200

Port: 4196

Work Mode: TCP Server

Net Mask: 255 . 255 . 255 . 0

Gateway: 192 . 168 . 1 . 1

Dest. IP/Domain: 192.168.1.3 Local IP

Dest. Port: 4196

**Serial**

Baud Rate: 115200

Data Bits: 8

Parity: None

Stop Bits: 1

Flow Control: None

**Advanced Settings**

DNS Server IP: 8 . 8 . 4 . 4

Dest. Mode: Dynamic

Transfer Protocol: None

Keep Alive Time: 60 (s)

Reconnect Time: 12 (s)

Http Port: 80

UDP Group IP: 230 . 90 . 76 . 1

☐ Register Pkt: ☐ ASCII

☐ Restart for no data every 300 Sec.

☐ Enable send parameter every 5 Min.

More Advanced Settings...

**Framing Rule**

Max Frame Length: 1300 (Byte)

Max Interval(Smaller will better) 3 (Ms)

Get Default Save As Default Load Default Modify Key Firmware/Config Restart Dev Modify Setting Cancel

(/wiki/File:600px-RS485\_B\_modify\_setting.png)

**Question:**What should I do if the web configuration interface cannot be opened?

**Answer:**

Configuration and download other firmware such as MQTT and Jetson Modbus cover the configuration interface web page file, you need to re-download

2043\_waveshare\_web\_zx.zip configuration interface web file (<https://files.waveshare.com/>

upload/4/40/2043\_waveshare\_web\_zx.zip) to RS485 TO ETH (B):

Webpage directly download mode —

Webpage directly in local PC:

E:\FAQ-QUECTEL\RS485 TO ETH B\2043\_waveshare\_web\_zx

Special configs:

Code file download mode —

Select code file:

C:\firmware.bin

Download through the network ☒ Download through serial port

Device IP address or domain: 192.168.10.61

Serial port: COM1

Download port (Don't modify): 1092

Baundrate: 115200

Device modual/type: 2003

Flash size: 256 KB

DevID: 285FCAD56BAD

Please close the opened webpage of the modual in the browser, before start download.

(/wiki/File:Web-config-tool.png)

**Question:What size is it suitable for connecting to the rail?**

**Answer:**

Can be connected to 3.5mm-3.7mm rails:



(/wiki/File:RS232\_IP\_Port.png)

## Support

### Technical Support

If you need technical support or have any feedback/review, please click the **Submit Now** button to submit a ticket, Our support team will check and reply to you within 1 to 2 working days. Please be patient as we make every effort to help

Submit Now (<https://service.waveshare.com/>)

you to resolve the issue.

Working Time: 9 AM - 6 PM GMT+8

(Monday to Friday)

*Retrieved from "[https://www.waveshare.com/w/index.php?title=RS232\\_TO\\_ETH\\_\(B\)&oldid=89968](https://www.waveshare.com/w/index.php?title=RS232_TO_ETH_(B)&oldid=89968)  
([https://www.waveshare.com/w/index.php?title=RS232\\_TO\\_ETH\\_\(B\)&oldid=89968](https://www.waveshare.com/w/index.php?title=RS232_TO_ETH_(B)&oldid=89968))"*

---