

Use Manual of Food Thermometer



Version: GM1311-EN-00

- 1 -

I. Introduction

This product is mainly used for measuring the food temperature pen type structure food-level stainless steel probe width of measuring scope. The probe-type food thermometer may be used for measuring the cooking temperature and grilling temperature being applicable for such various fields as refrigeration heating food processing and rubber and plastic processing.

II. Functional Characteristics

- ▶ Temperature locking temperature
- ▶ Maximum /minimum measuring function
- ▶ Conversion function of °C/°F temperature unit
- ▶ Low power prompt
- ▶ LCD display
- ▶ Automatic shutoff
- ▶ Novel handy and portable appearance design
- ▶ Using Japan imported sensors

III. Name of Each Part (As Shown in Figure 1)

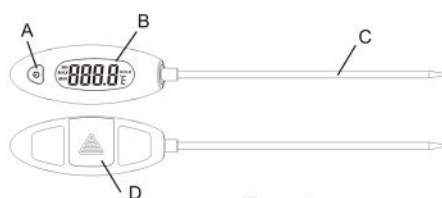


Figure 1

- 2 -

- A). Start/shutoff function key
- B). LCD
- C). Temperature measuring probe
- D). Battery door

IV. LCD Display (As Shown in Figure 2)



Figure 2

- 1. Temperature reading
- 2. Reading lock
- 3. Temperature unit
- 4. Minimum
- 5. Maximum
- 6. Electric quantity of battery

V. Battery Change

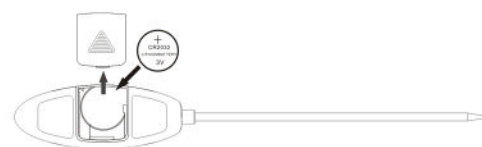


Figure 3

- 1、 Open the battery cover and install CR2032 button battery (As Shown in Figure 3).

- 3 -

2、 Cover the battery cover

- 3、 When the electric power of battery is insufficient " " symbol may appear on LCD to show that the electric power of battery is insufficient the new battery must be replaced.

VI. Operation Method

- 1.This machine is provided with one power key only; click the power key and enter into normal testing status.
- 2.After starting, the temperature may be locked by clicking the power supply and the locking may be relieved by clicking once again.
- 3.After starting, enter into different measuring modes by clicking the power supply right now the maximum/minimum/normal measuring mode may be switched by clicking. In maximum /minimum/normal measuring mode this machine can't shut off automatically. Quit the measuring mode by double clicking and thus recover the automatic shutoff function.
- 4.After starting enter into conversion between °C and °F by pressing the power key for three times.
- 5.This machine may shut off automatically during 12min no operation. Or the machine is shut off manually through pressing 2s power key for long term.

VII. Safety Notice

1. Notice:

- ▶ It is forbidden to use any solvent to clean this product. While cleaning only small amount of water is required to lightly wipe this product.

- 4 -

- ▶ It is forbidden to place the instrument into the air containing chemical substances and the instrument can't be placed together with poisonous substances.
- ▶ When no use for long term take out the battery please! Thus the battery life may be prolonged.
- ▶ It is forbidden to immerse the thermodector into water.

2. Warning:

- ▶ The probe of this thermodector is sharp, it is strictly to be used for probe through aligning to others;
- ▶ Place the thermodector in the safety place the children is forbidden to touch it so as to avoid injuring.
- ▶ Use this product by correct method (as shown in Figure 4), While measuring the high-temperature object don't touch the probe by hand so as to avoid scalding

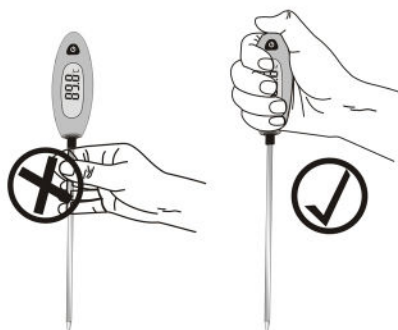


Figure 4

- 5 -

VIII. Technical Parameter

Temperature measuring scope	-50 ~ 300°C (-58 ~ 572°F)
Resolution	0.1°C
Accuracy	-10 ~ 100°C ±1°C 100 ~ 200°C ±1.5°C Others ±2°C
Power Source	CR2032 Button Battery*1
The environment temperature	0 ~ 40°C (32 ~ 104°F)
Environmental humidity	10-90% RH
Length of Whole Machine	242.5*33mm
Net Length of Probe Rod	149.5*4mm
Display Dimension	44*18mm

Specific Declarations:
Our company shall hold no any responsibility resulting from using output from this product as an direct or indirect evidence.
We reserves the right to modify product design and specification without notice.

- 6 -